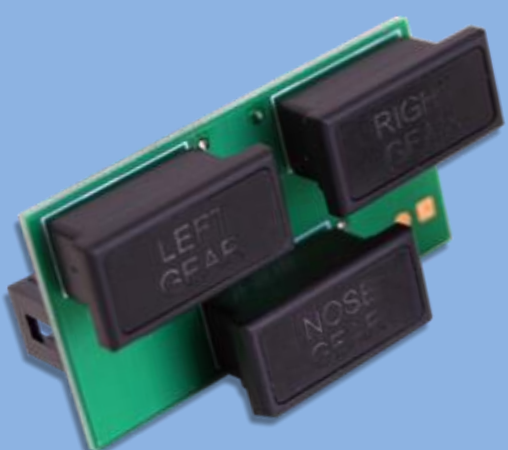


**AFTO LEVER GEAR ANNUNCIATORS Module**

**S737-AOH-C-NL-A10-1022**

Datasheet - AFTO Level Gear Annunciators Module V1 - Rev1.1.docx



Module Dimensions: (WxHxD) mm3	TBD
Module Line:	N/A
Backlight (12V):	No
Backpanel:	Yes, Specific PCB
Hardware Interface: (See Chapter 1.2)	To be connected to a Control Board like SimCard Ethernet, IOCard USB, etc.
Knobs:	N/A
Plug Ready Module	Yes
Simulator Model:	Sim737NG
Scale:	1:1
Price (without VAT)	Web: Shop

www.sismo-soluciones.com

## 1 Compatibility

### 1.1 Software Compatibility

This module uses IDC connectors to interface with the electronic I/O Board, therefore cannot be connected directly to a Computer, it has to be though an electronic Board (see hardware compatibility). If the electronic board is a SimCard, then this module is compatible with the following Add-Ons:

iFly737			Prosim737			Project Magenta			PMDG 737NG			SimAvionics		
FSX	P3D	XPLANE	FSX	P3D	XPLANE	FSX	P3D	XPLANE	FSX	P3D	XPLANE	FSX	P3D	XPLANE
X	X	?	X	X	?	X	X	X	X	X	?	X	X	?

X	Fully compatible, scripts available in downloads sect.
X	Fully compatible, no scripts available (under development)
X	Compatible with some add-on limitations
?	Pending confirmation for the add-on company

FSX	Microsoft Flight Simulator X
P3D	Lockheed Martin Prepar3D
X-Plane	X-Plane

This module has been designed to be connected directly to the “Sismo AFTO Baseplate V2” or superior. This baseplate is an option where cables or other elements are not necessary. If you want to use it in other configuration, just connect the flat ribbon cables following the indications of the “Wiring Schedule”.

## 1.2 Hardware Compatibility (I/O Boards)

SimCards Ethernet	IOCards	Phidgets	MIP737	Pokeys USB	Arduino
Yes (Recommended)	Yes	Yes	Yes	No Information	Yes

## 1.3 Module Backpanel (PCB) Compatibility

This datasheet is valid for the following module backpanels (PCB):

V1							
Yes							

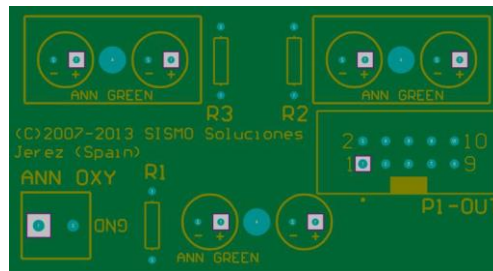
## 2 Abbreviations

PRM	Plug Ready Module
-----	-------------------

## 3 Customization

There are no customizations for this module.

## 4 Backpanel Connectors



## 5 Parts included

- 1 AFTO Level Gear ANN Module, fully assembled and ready to be installed on the AFTO.
- 1 Un. 10-pin flat ribbon cable (25cm length). For other lengths, please contact Sismo.

## 6 Wiring Schedule

### 6.1 Output

Function	State	P3-OUT		State	Function
Not used		1	2		Not used
Not used		3	4		Not used
Not used		5	6	ON	Annunciator Gear Nose
Annunciator Gear Left	ON	7	8	ON	Annunciator Gear Right
Not used		9	10	Common GND	

Note: Remark about the Output +5Vcc= ON / 0 Vcc = OFF

If Sismo Baseplate is going to be used, this module must be connected to the Baseplate through the Oxygen Panel Module.

## 7 Related Documentation

ID	DOCUMENT	Revision
01	User Manual – SimCards Ethernet	See the latest on our website
02	Datasheet – AFT Backpanel	See the latest on our website

## 8 Pictures

--	--

**End of Document**