


Master Caution & Fire Warn Pushbuttons with Light

S737-MIP-C-NL-A10-0135

Datasheet - Master Caution and Fire Warn Pushbutton with Light V1 - Rev1.2

	Module Dimensions: (WxHxD) mm3	Square 21mm side
	Module Line:	N/A
	Backlight (12V):	No
	Backpanel:	No
	Hardware Interface: (See Chapter 1.2)	To be connected to a Control Board like SimCard Ethernet, IOCard USB, etc.
	Knobs:	No
	Plug Ready Module:	No
	Simulator Model:	Sim737NG
	Scale:	1:1
	Price (without VAT)	Web: Shop

www.sismo-soluciones.com

## 1 Compatibility

### 1.1 Software Compatibility

This module uses free wiring to interface with electronic I/O Boards, they cannot be connected directly to a Computer, it has to be through an electronic Board (see hardware compatibility). If the electronic board is a SimCard, then this module is compatible with the following Add-Ons:

iFly737			Prosim737			Project Magenta			PMDG 737NG			SimAvionics		
FSX	P3D	XPLANE	FSX	P3D	XPLANE	FSX	P3D	XPLANE	FSX	P3D	XPLANE	FSX	P3D	XPLANE
X	X	?	X	X	?	X	X	X	X	X	?	X	X	?

X	Fully compatible, scripts available in downloads sect.
X	Fully compatible, no scripts available (under development)
X	Compatible with some add-on limitations
?	Pending confirmation for the add-on company

FSX	Microsoft Flight Simulator X
P3D	Lockheed Martin Prepar3D
X-Plane	X-Plane

## 1.2 Hardware Compatibility (I/O Boards)

SimCards Ethernet	IOCards	Phidgets	MIP737	Pokeys USB	Arduino
Yes (Recommended)	Yes	Yes	Yes	No Information	Yes

## 2 Abbreviations

PRM	Plug Ready Module
MIP	Main Instrument Panel
NC	Normally Closed
NO	Normally Open

## 3 Customization

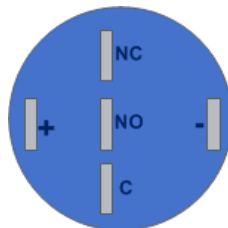
There are no customizations for this product.

## 4 Parts included

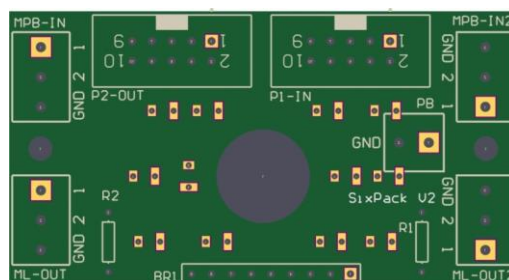
- 1 Master Caution Pushbutton, fully assembled and ready to be installed on the MIP.
- **150 Ohms** resistor and/or
- 1 Fire Warning Pushbutton, fully assembled and ready to be installed on the MIP.
- **150 Ohms** resistor

## 5 Backpanel Connectors

### 5.1 Custom wiring



### 5.2 Connecting with the SixPack Module PCB



## 6 Wiring Schedule

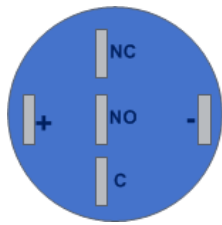
### 6.1.1 Inputs

Function	State	PIN
Not used		NC
Push-Button Fire Warn / Master Caution	ON	NO
Common Ground for inputs 1 to 2	GND	C

### 6.1.2 Outputs

Function	State	PIN
Led Fire Warn / Master Caution	ON*	+
Common Ground for NC and NO	GND	-

\*+2.2Vcc= ON / 0Vcc= OFF



Back View  
(pins Master Switch)

**Option 1:** if the outputs are going to be connected *to a card* which supplies 5V DC, a **150 Ohms** resistor must be added in the “+” terminal, otherwise the LEDs will be burnt.

**Option 2:** it is not necessary to add any resistor if the outputs are going to be connected to the PRM SixPack (see Datasheet SixPack)

## 7 Related Documentation

ID	DOCUMENT	Revision
01	User Manual – SimCards Ethernet	See the latest on our website
02	User Manual – MIP Ethernet	See the latest on our website
03	User Manual – Hookup & Wiring Guideline	See the latest on our website
04	Wiring Layout – CAIP, FOIP, CEIP	See the latest on our website
05	Datasheet – SixPack Module + Master Light Pushbuttons	See the latest on our website

## 8 Pictures



End of Document