

**Display Selector Module - DS**

CAP S737-MIP-M-AL-A30-0154

F/O S737-MIP-M-AL-A30-0171

Datasheet - DS Module V3 - Rev1.3



Module Dimensions: (WxHxD) mm3	119 x 66 x 25 mm3 <i>Height of Knobs Not included</i>
Module Line:	Alpha
Backlight (12V):	Yes, Warm White
Backpanel:	Yes, Specific PCB
Hardware Interface: (See Chapter 1.2)	To be connected to a Control Board like SimCard Ethernet, IOCard USB, etc.
Knobs:	Realistic Injection Plastic Knobs
Plug Ready Module:	Yes
Simulator Model:	Sim737NG
Scale:	1:1
Price (without VAT)	Web: Shop

www.sismo-soluciones.com

## 1 Compatibility

### 1.1 Software Compatibility

This module uses IDC connectors to interface with electronic I/O Boards, they cannot be connected directly to a Computer, it has to be through an electronic Board (see hardware compatibility). If the electronic board is a SimCard, then this module is compatible with the following Add-Ons:

iFly737			Prosim737			Project Magenta			PMDG 737NG			SimAvionics		
FSX	P3D	XPLANE	FSX	P3D	XPLANE	FSX	P3D	XPLANE	FSX	P3D	XPLANE	FSX	P3D	XPLANE
X	X	?	X	X	?	X	X	X	X	X	?	X	X	?

X	Fully compatible, scripts available in downloads sect.
X	Fully compatible, no scripts available (under development)
X	Compatible with some add-on limitations
?	Pending confirmation for the add-on company

FSX	Microsoft Flight Simulator X
P3D	Lockheed Martin Prepar3D
X-Plane	X-Plane

This module has been designed to be connected directly to the “**CAIP Electronic Backpanel or FOIP Electronic Backpanel**”. This backpanel is an option where cables or other elements are not necessary. If you want to use it in another configuration, just connect the flat ribbon cables following the indications on the “**Wiring Schedule**”.

## 1.2 Hardware Compatibility (I/O Boards)

SimCards Ethernet	IOCards	Phidgets	MIP737	Pokeys USB	Arduino
Yes (Recommended)	Yes	Yes	Yes	No Information	Yes

## 1.3 Module Backpanel (PCB) Compatibility

This datasheet is valid for the following module backpanels (PCB):

V1	V1.5	V2	V3				
No	No	No	Yes				

## 2 Abbreviations

PRM	Plug Ready Module
MIP	Main Instrument Panel
CAIP	Captain Instrument Panel
FOIP	First Officer Instrument Panel
DS	Display Selector

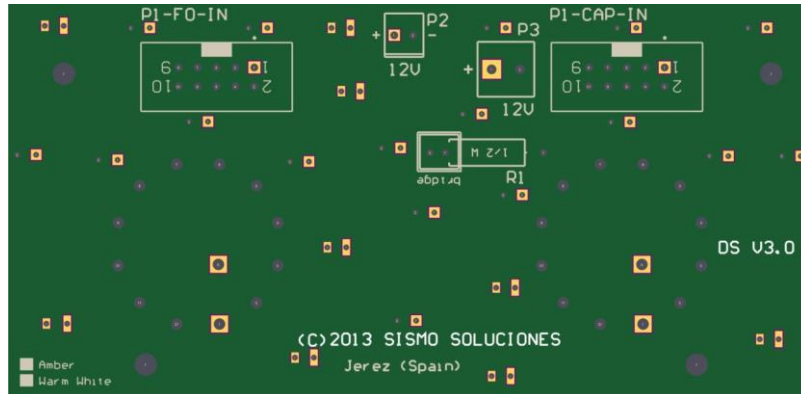
## 3 Customization

There are two DS Modules per MIP, one for the Captain side, the other for the First Officer. The panels change accordingly (see photos below).

## 4 Parts included

- 1 DS Module, fully assembled and ready to be installed on the MIP.
- 1 un. 10 pins flat ribbon cable (length 25cm). For other lengths, please contact Sismo.
- 2 painted screws M4x12 to fix the module to the MIP casing (Fully compatible with the MIP casing of Sismo.)
- 1 Female connector for backlight

## 5 Backpanel Connectors



## 6 Wiring Schedule

### 6.1 Inputs

#### 6.1.1 Captain

Function	State
Rotary CAP MAIN PANEL OUTDB PFD	ON
Rotary CAP MAIN PANEL ENG PRI	ON
Rotary CAP MAIN PANEL MFD	ON
Rotary CAP LOWER DU NORM	ON
Not used	

P1-CAP-IN	
1	2
3	4
5	6
7	8
9	10

State	Function
ON	Rotary CAP MAIN PANEL NORM
ON	Rotary CAP MAIN PANEL PFD
ON	Rotary CAP LOWER DU ENG PRI
ON	Rotary CAP LOWER DU ND
Common GND for inputs 1 to 8	

#### 6.1.2 F/O

Function	State
Rotary F/O MAIN PANEL MFD	ON
Rotary F/O MAIN PANEL ENG PRI	ON
Rotary F/O MAIN PANEL OUTDB PFD	ON
Rotary F/O LOWER DU NORM	ON
Not used	

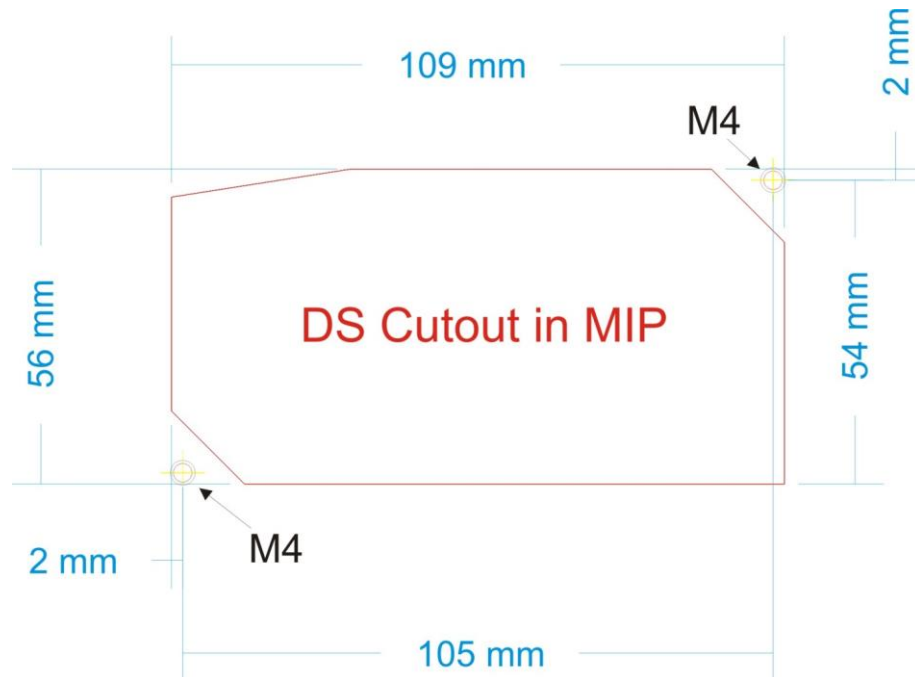
P1-F0-IN	
1	2
3	4
5	6
7	8
9	10

State	Function
ON	Rotary F/O MAIN PANEL PFD
ON	Rotary F/O MAIN PANEL NORM
ON	Rotary F/O LOWER DU ND
ON	Rotary F/O LOWER DU ENG PRI
Common GND for inputs 1 to 8	

### 6.2 Backlight

P2-P3-12V	
Backlight	12V for backlight. This voltage can be provided directly from a 12 V DC power supply or can be provided by a "dimmer backlighting board" to have the dimming functionality available.

## 7 Screws Position



## 8 Related Documentation

ID	DOCUMENT	Revision
01	User Manual – SimCards Ethernet	See the latest on our website
02	User Manual – MIP Ethernet	See the latest on our website
03	User Manual – Hookup & Wiring Guideline	See the latest on our website
04	Wiring Layout – CAIP, FOIP, CEIP	See the latest on our website

## 9 Pictures



Ref: S737-MIP-M-AL-A30-0154



Ref: S737-MIP-M-AL-A30-0171

End of Document